

13/52

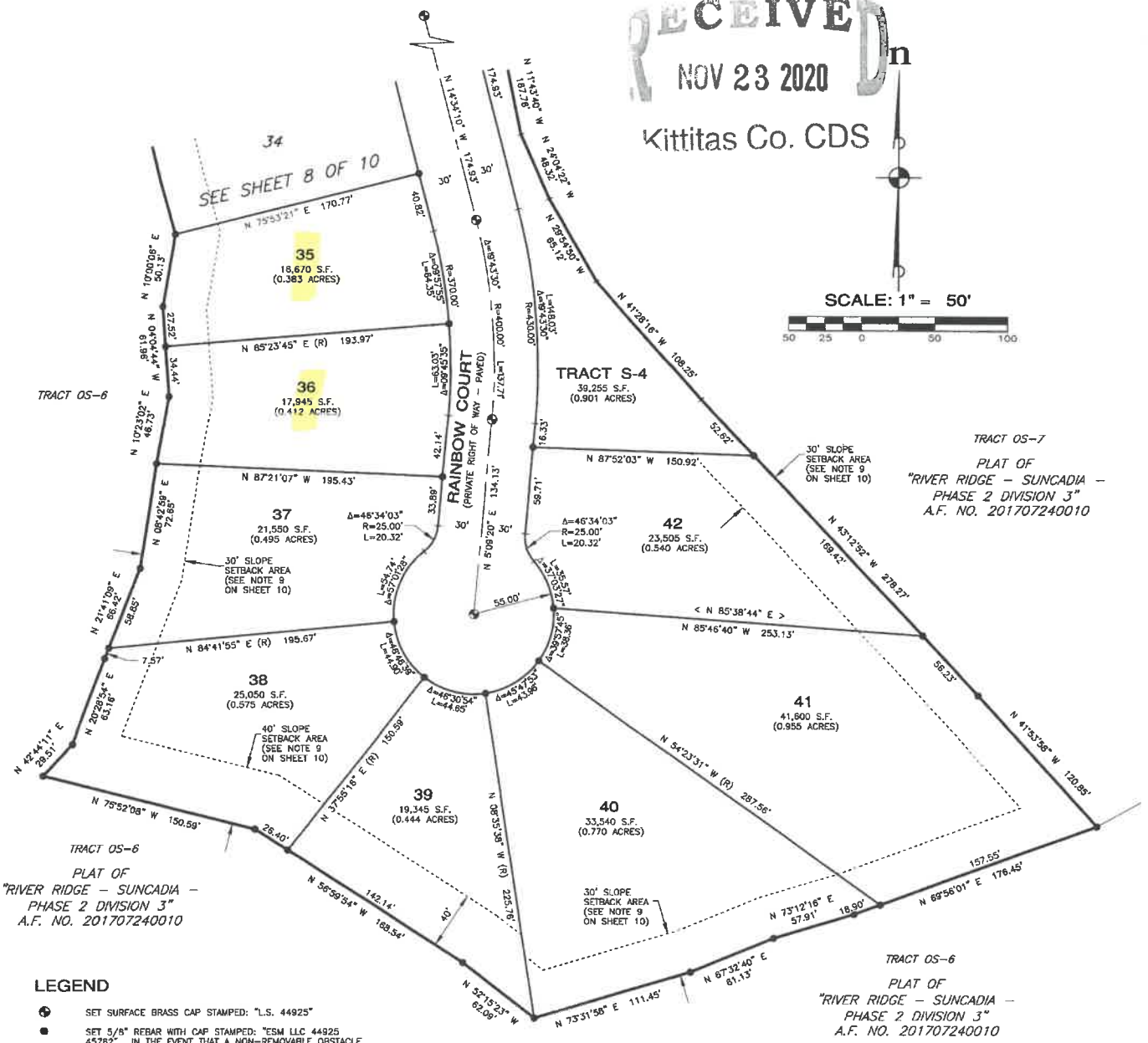
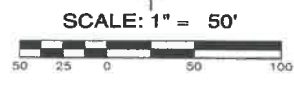
RIVER RIDGE II SUNCADIA - PHASE 2 DIVISION 5

A PORTION OF SECTIONS 18 AND 19, T. 20 N., R. 15 E., W.M.
KITITAS COUNTY, WASHINGTON
ASSESSOR MAP NUMBERS 20-15-18053-0054, 20-15-18053-0072 AND 20-15-18053-0073

06/28/2019 02:54:48 PM V: 13 P: 52 201908260068
Kititas County Auditor
Page 9 of 19

LP-19-00001
LPF-19-00006

RECEIVED
NOV 23 2020
Kittitas Co. CDS



- LEGEND**
- ⊙ SET SURFACE BRASS CAP STAMPED: "L.S. 44925"
 - SET 5/8" REBAR WITH CAP STAMPED: "ESM LLC 44925 45782" IN THE EVENT THAT A NON-REMOVABLE OBSTACLE PREVENTS SETTING THE ACTUAL PROPERTY CORNER, A STAMPED 2" ALUMINUM CAP WILL BE SET ON THE PROPERTY LINE AS AN OFFSET TO THE ACTUAL CORNER WITH THE DISTANCE TO THE ACTUAL CORNER NOTED THEREON.
 - Δ DELTA
 - R RADIUS
 - L ARC LENGTH
 - (R) RADIAL BEARING
 - < > RADIAL BEARING AT LOT CORNER
 - << >> DISTANCE MONUMENT TO MONUMENT
 - OS-1 OPEN SPACE TRACT - DESIGNATION NUMBER
 - S-1 SERVICE TRACT - DESIGNATION NUMBER

RECORDING CERTIFICATE

FILED FOR RECORD AT THE REQUEST OF KITITAS COUNTY BOARD OF COMMISSIONERS, THIS 20th DAY OF AUGUST, A.D. 2019, AT 54 MINUTES PAST 2 O'CLOCK P.M., AND RECORDED IN VOLUME 13 OF PLATS, ON PAGE 44-53, RECORDS OF KITITAS COUNTY, WASHINGTON.

BY: [Signature] Kititas County Auditor
DEPUTY COUNTY AUDITOR

AUDITOR'S REFERENCE: 201908260066



ESM CONSULTING ENGINEERS LLC
33400 8th Ave. S, #205
Federal Way, WA 98003
www.esmcivil.com

FEDERAL WAY (253) 839-8113
EVERETT (425) 297-9900

Civil Engineering | Land Surveying | Land Planning
Public Works | Project Management | Landscape Architecture

DATE: 2019-08-08 | JOB NO. 998-773-018-0002
DRAWN BY: C.A.F./R.F.G. | SHEET 9 OF 10